

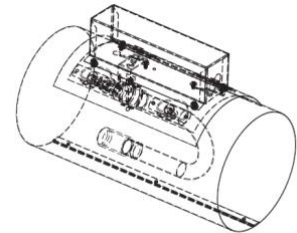
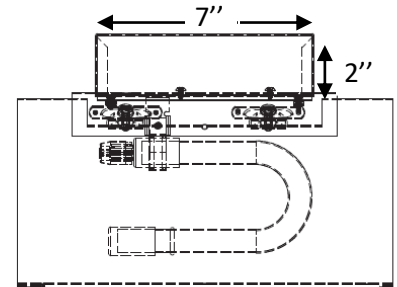
**TECHNICAL SPECS - HRV6 GX
UV AIR PURIFIER FOR 6" ROUND DUCTS**

Description

The HRV6 GX is specifically designed to be connected to the air ducts of an HRV system. During the recirculation cycle, UVC and UVV radiation will reduce both biological (bacteria, mold, viruses, etc.) and chemical (VOC, formaldehyde, cooking odor, animal odor, etc.) biocontaminants. It therefore treats all the air of a residence.

Unit

- Pipe and parts: all aluminum and steel
- Dimensions: 6" diameter x 9.5" long (15 cm x 30 cm)
- Weight: 3 lbs (1.36kg)
- Consumption (120V): 0.5A, 32W
- Lamp: 6.5 in "J" lamp UVC-UVV (LMPHGXJ65)
- Ballast switch: 120V or 240V (BST120/240 GL20)
- LED status lights: one for the ballast, one for the lamp
- Power cord: 6ft length with 3 prongs
- UV aluminum reflector, access door with easy clamp for the lamp



Warranty (parts)

- ballast 3 years, lamp 3 years

Written specifications

UV air purification unit to install in the air supply duct. Must include a UVC-UVV lamp installed parallel to the air flow to increase contact time and reduce fooling. The unit includes an access door and a power cord for easy maintenance. It is highly suggested that the unit be connected to the fan by a relay and turn off the lamp when the fan turns off. A 3-year warranty on the ballast and lamp is mandatory.

Caution

UV light destroys plastics. It is therefore necessary to prevent UVs from directly reflecting the HRV / ERV unit, which is largely composed of plastic parts. Use UV-resistant materials such as rigid metal pipes or aluminized flexible pipe.

Installation

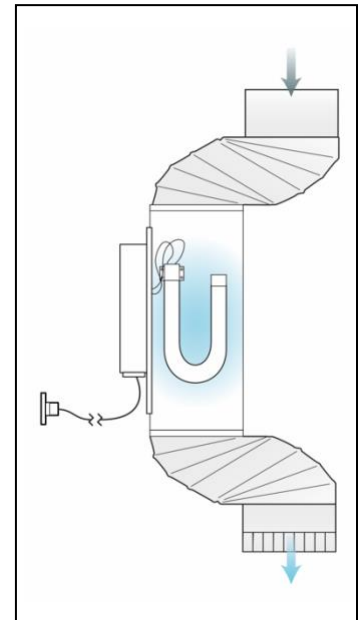
In a straight run you must move the unit laterally (see illustration):

- Galvanized duct pipe: use four 45° elbows alternately to isolate UVC emission from direct "sighting" of the HRV / ERV core unit.
- Flex aluminum duct: make sure that you do a serpentine path that will prevent "direct sighting" to the HRV\ERV core unit.

IN ALL CASES, PROTECT YOUR SKIN AND EYES FROM UV RADIATION.

ALWAYS UNPLUG UNIT BEFORE SERVICING.

INSTALLATION



MODEL	QTY	COMMENTS	PROJECT:	Drawings for: <input type="checkbox"/> Information <input type="checkbox"/> Approval
			LOCATION:	
			ARCHITECT:	
			ENGINEER:	
			CONTRACTOR:	
			DATE:	